

ES 80-12

AGM-VRLA 12V - 80Ah

INTRODUCTION

The most popular series of ROCKET Batteries; The ES series has been performing with a proven track record for more than 52 years. It has successfully exemplified its quality and reliability in some of the most demanding power conditions by providing unrelentless backup power supply.

With the same characteristics as that of the ESC series, the ES series provides power reliability to applications which require longer backup time.

This series is widely used in UPS as well as Telecommunication Applications in many parts of the world. The ES series is world renowned and recognised as a Highly reliable Battery System in the industry.

SPECIFICATION

Nominal Voltage		12V
Nominal Capacity		80Ah
Dimensions	Length	259mm
	Width	168mm
	Height	208mm
	Total Height	214mm
Approx Weight		24kg
Design Life		10 Years

TECHNICAL FEATURES

- ✓ Non-Spillable Sealed Construction
- ✓ Absorbent Glass Mat System (AGM System)
- ✓ ABS (Acrylonitrile Butadiene Styrene) container and cover
- ✓ Gas Recombination
- ✓ Maintenance-Free Operation
- ✓ Low Pressure Venting System
- ✓ Heavy - Duty Grids
- ✓ Low Self-Discharge - Long Shelf Life
- ✓ Wide Operating Temperature Range

APPLICATIONS

- ✓ UPS
- ✓ Telecom Communication Equipments
- ✓ Fire Alarm & Security Systems
- ✓ Medical Instruments
- ✓ Computer Backup

COMPLAINTS STANDARD

- ✓ IEC 60896 PART 1 & 2
- ✓ BS6290-4,
- ✓ Eurobat Guide - HIGH Performance

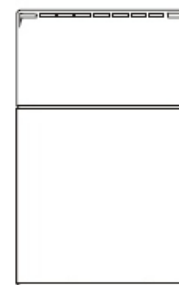
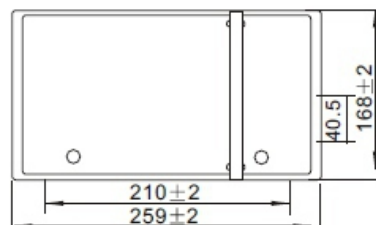
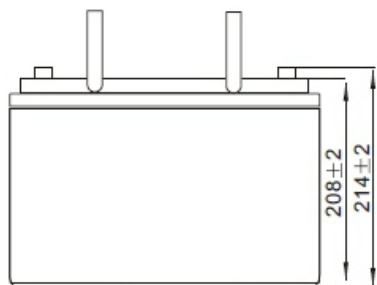
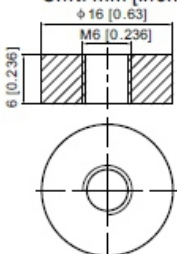
CHARACTERISTICS

Internal resistance		Approx 6.0mΩ
Operating temperature range	Discharge	-15°C to 50°C
	Charge	0°C to 40°C
	Storage	-15°C to 40°C
Self-discharge 25°C(77°F)	Upto 6 Months	
Nominal capacity 77°F(25°C)	20 hour rate	80Ah
	10 hour rate	74Ah
	5 hour rate	69.0Ah
	3 hour rate	62.4Ah
	1 hour rate	48.8Ah
Max. discharge Current 77°F(25°C)		960A(5s)
Charge Methods (Constant Voltage Charge 25°C(77°F)	Cycle Use 14.4V~15.0V	
	Temp. Compensation -30mV/°C	
Charge Methods (Constant Voltage Charge 25°C(77°F)	Standby Use 13.5V~13.8V	
	Temp. Compensation -20mV/°C	

THE BATTERY CONTAINER AND COVER ARE AVAILABLE BOTH IN ABS plastic and Flame Retardant (FR).

T6 Terminal

Unit: mm [inches]



ES 80-12

AGM-VRLA 12V - 80Ah

CONSTANT CURRENT DISCHARGE (Amperes) at 25°C

F.V/Time	5min	10min	15min	20min	30min	45min	1h	2h	3h	4h	5h	6h
1.85V/cell	136.9	107.6	91.5	76.6	60.9	46.1	37.7	24	19.0	15.5	12.5	10.9
1.80V/cell	183.8	137.5	110.6	90.5	71.8	53.6	42.2	26.2	20.4	16.6	13.4	11.7
1.75V/cell	207.2	151.1	120.8	97.4	74.6	55.6	44.2	27.2	20.8	16.9	13.8	12.0
1.70V/cell	228.2	164.7	129.0	102.3	77.6	57.8	45.6	28.3	21.4	17.4	14.1	12.2
1.65V/cell	251.6	177.8	137.2	108.7	81.9	59.3	47.1	29.1	22.3	18.0	14.5	12.5
1.60V/cell	277.5	193.0	146.7	115.8	86.4	61.8	48.8	30.0	23.0	18.5	15.0	12.8

CONSTANT POWER DISCHARGE (Watts per cell) at 25°C

F.V/Time	5min	10min	15min	20min	30min	45min	1h	2h	3h	4h	5h	6h
1.85V/cell	250.3	198.8	170.8	144.3	116.0	88.5	72.7	46.7	37.0	30.3	24.5	21.4
1.80V/cell	332.5	251.1	203.6	168.1	134.8	102.2	81.1	50.6	39.6	32.2	26.2	22.9
1.75V/cell	366.9	271.5	219.7	179.1	138.8	105.0	84.4	52.3	40.2	32.8	26.8	23.4
1.70V/cell	392.8	289.2	231.3	186.8	143.6	108.8	86.8	54.2	41.2	33.6	27.4	23.9
1.65V/cell	427.0	309.2	244.0	197.0	150.3	110.5	89.1	55.4	42.8	34.7	28.1	24.3
1.60V/cell	460.1	328.1	256.7	207.5	157.5	114.6	91.7	57.0	43.9	35.6	28.9	24.8

